



Technical Specifications

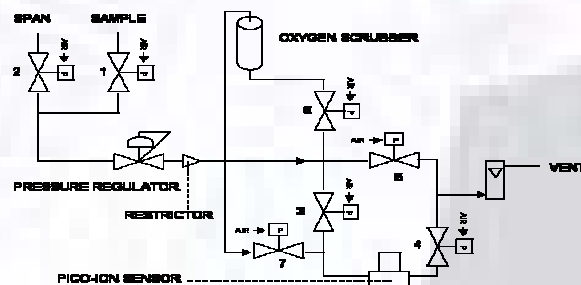
Accuracy:	< 1% of FS range under constant conditions			
Analysis:	0-100 ppb, 0-1 ppm, 0-10, 0-100 ppm FS ranges; auto-ranging or manually lock on single range			
Application:	Oxygen analysis from 0.5 ppb to 100 ppm in ultra-high purity process gases inert, hydrocarbon, He and H ₂			
Approvals:	CE			
Area Classification:	General purpose			
Alarms:	2 adjustable form C relay contacts non-latching; "weak sensor" indicator; power failure; system failure			
Calibration:	Certified gas of O ₂ balance N ₂ approximating 80% of range above analysis range recommended for optimum			
Compensation:	Barometric pressure and temperature; heated sample system and sensor housing			
Connections:	Sample and span inlets - 1/4" VCR fittings; air inlet and vent - 1/4" compression tube fittings			
Controls:	Water resistant keypad; menu driven range selection, calibration, alarm and system functions			
Data Acquisition:	Selectable data point intervals			
Display:	Graphical LCD 5 x 2.75; resolution 0.5 ppb; displays real time ambient temperature and pressure			
Enclosure:	Painted aluminum 13.9" x 9.9" x 13.4" benchtop			
Flow Sensitivity:	None between 1-3 SCFH, 2 SCFH recommended			
Linearity:	> .995 over all ranges			
Pressure:	Inlet - regulate to 20-50 psig, max 150 psig; vent - atmospheric not to exceed ±5" water column			
Power:	Specify 100/120 or 220/240 VAC			
Recovery Time:	O ₂ Level	Duration	O ₂ Target	Recovery on N ₂
	9 ppm	1 minute	10 ppb	15 minutes
	9 ppm	1 minute	1 ppb	60 minutes
	1 ppm	5 minutes	1 ppb	30 minutes
Response Time:	90% of final FS reading < 60 seconds			
Sample System:	Manual pressure regulation, flow control and indicator; pneumatic (minimum 80 psig air supply) sample and span inlet valves, bypass and isolation valves; integral O ₂ scrubber (for consistent zero gas) and valves; electro-polished tubing; orbitally welded or VCR connections.			
Sensitivity:	< 0.5% of FS range			
Sensor Model:	GPR-13-2000UHP - requires no maintenance			
Sensor Life:	18 months at 25°C and 1 atm; average O ₂ < 100 ppm			
Signal Output:	4-20mA isolated and 0-1V			
Temp. Range:	5° to 45°C			
Warranty:	12 months analyzer; 12 months sensor			
Wetted Parts:	316L stainless steel			



GPR-1600 UHP Process ppb O₂ Analyzer

Pico-Ion™ Sensor Technology
Accuracy < 1% FS Range
Sensitivity < 0.5% FS Range
Fast Recovery to ppb Levels
Excellent Stability
18 Month Expected Life
No Maintenance

Auto Zero, Span Calibration
4 Standard Analysis Ranges
Auto-ranging or Manual



316L SS Sample System
Pneumatic Valves
Orbitally Welded
VCR Connections
Bypass Loop > Productivity
Integral Zero Gas System
Remote Communication Link
Certified ISO 9001 QA System



Optional Equipment

Analysis ranges: 0-50 ppb, 0-500 ppb, 0-5 ppm, 0-50 ppm
 Bezels for panel and 19" rack mounting; wall mount NEMA4X enclosure